

Full movements - Full parts recovery
for plants with disassembly lines

DISMANTLING LIFT

PRT



Tilting lift / lift
for car parts disassembly



3 tons
MAX LOAD



34" / 17"
UP / DOWN



25" / 17"
TILTING



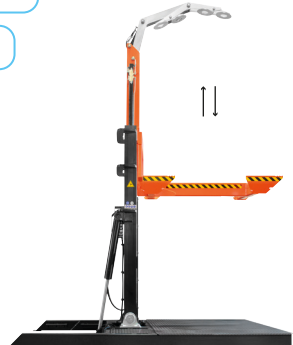
2,3 m
MAX HEIGHT

- Safe, stable and strong
- High lifting speed
- Specially designed for the dismantling process
- Ergonomic
- High safety standards
- Easy to use
- Easy maintenance

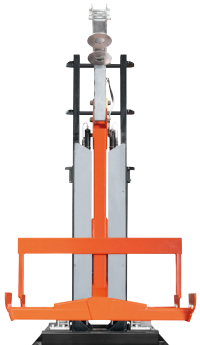


Non-slip platform

Compact base



Ergonomic

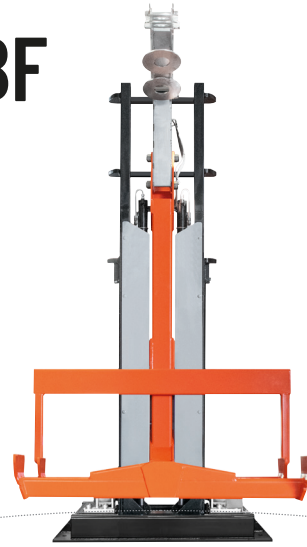


PRT



Con pedana antiscivolo

PRT BF

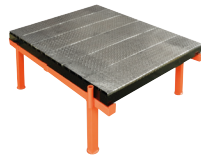
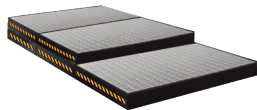


For use with trolley, more space available

Compact base

OPTIONAL

- GR-R: Grill - 5 basins 100 x 150 x h 13 cm
- BND: Tools support arm
- BSM: Engine disassembly bench



PRT - 142080400 / PRT BF - 142080500BF

Load capacity	max	3000
Lifting		
Max lifting height		2035
Maximum lifting stroke		1635
Lifting time		↑ 34" - 17" ↓ sec
Hydraulic circuit pressure	max	200
RTilting		
TTilting time		↑ 25" - 17" ↓ sec
Tilting angle		90°
Hydraulic circuit pressure	max	160
Power supply	max	3 kW
Voltage	max	Trifase - 380 V - 50 Hz
Rated current		7 A
'A' Weighted sound pressure level (LPA)		70 dB